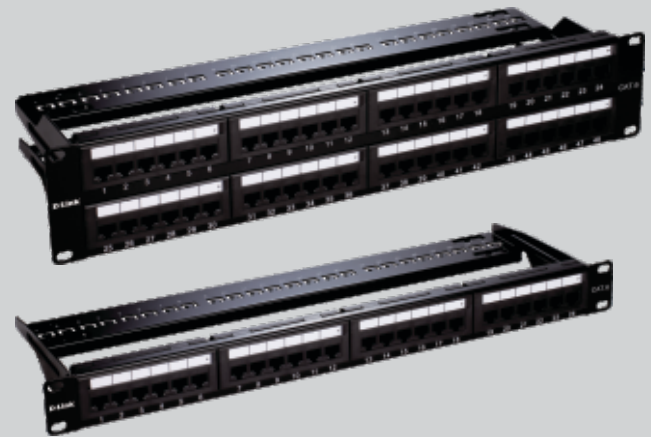


**Cat 6 UTP Loaded Patch Panel**

D-Link Category 6 patch panels are six port RJ45 modules applied and suitable for 22-26AWG stranded and solid wire, compatible with both 110 & Krone punch down tools. D-Link patch panels have improved Cable Management with optional Cable Management bar terminating 4 pairs UTP cable. They are complied with the ANSI/TIA/EIA-568-C.2 standard.



**SPECIFICATIONS**

- Identification: ID plate: **PVC, transparent color with paper**
- Panel: **SPCC, 1.5mm thickness with black color painted**
- RJ45 Jack: Housing: **ABS, UL 94V-0**  
Contact Brackets: **PC, UL 94V-2, transparent color**
- RJ45 Jack contact: **Material-phosphor bronze with nickel plated**  
Finish: **50 micro-inches Gold plated on plug contact area**
- IDC: Housing – **PC + glass fiber, UL 94V-2**  
Terminal: **Phosphor bronze with tin plated**
- Jack Bracket Set: **ABS, UL 94V-0**
- Support Bar: **SPCC, 1.5 mm thickness with black color painted**

**ORDERING INFORMATION**

CAT6 Jack Panel	
Part Code	Description
NPP-C61BLK241	Cat6 UTP 24 Port Loaded Patch Panel
NPP-C61BLK481	Cat6 UTP 48 Port Loaded Patch Panel



D-Link (India) Limited  
Kalpataru Square, 2nd Floor, Kondivita Lane, Andheri-East, Mumbai-400059  
Specifications are subject to change without notice.  
D-Link is a registered trademark of D-Link Corporation and its overseas subsidiaries.  
All other trademarks belong to their respective owners.  
©2010 D-Link Corporation. All rights reserved. Release 01 (May 2010)